

✕ Compatible with Excel Cat 5e, Cat 6 & Cat 6A Jacks

✕ Choice of Black and Chrome Finish

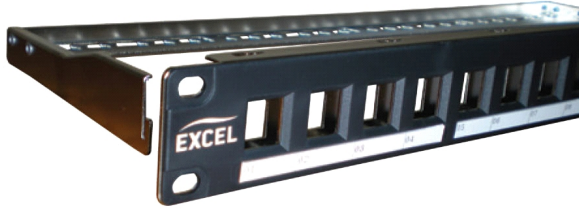
✕ Option to part or fully load

Features

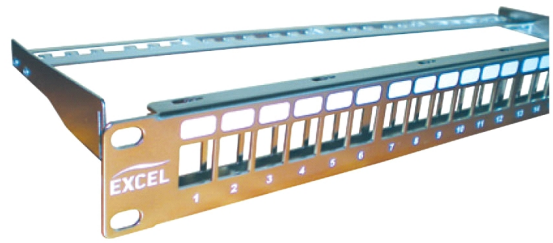
- ✕ Compatible with Excel Cat 5e, Cat 6 & Cat 6A Jacks
- ✕ Option to part or fully load
- ✕ Supplied with earthing kit
- ✕ Compatible with Excel toolless screened keystone jacks
- ✕ No.3 cabling system by market share, as reported by BSRIA
- ✕ Choice of Black and Chrome Finish
- ✕ Supplied with snap on rear management tray
- ✕ Choice of port density - 16, 24 ports per 1U
- ✕ Modular design is ideal for standard and pre-terminated installations

Product Overview

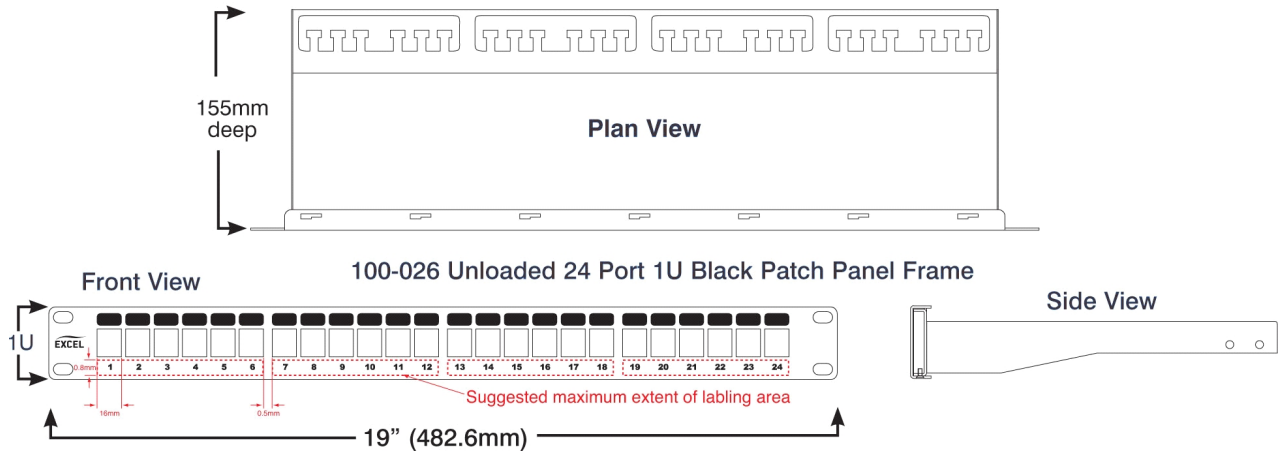
Excel keystone jack patch panel frames are available for mounting of the range of screened and unscreened Excel toolless keystone jacks. Two finishes are available, a traditional black facia design and a new chrome finish which when used with the recently introduced chrome patch cable management bars brings an entirely new, aesthetically enhanced finish to cabinet installations. Each are available with a maximum port density of either 16 or 24 keystone jacks in 1U of rack space. A rear management tray with purposely designed cable tie positions, is supplied with each panel which is fitted without the need for any tools or fixings by simply snapping it into place. To complete the installation an earthing kit, and a set of M6 cage nuts is also supplied with the patch panel frame.



Part No 100-025, Unloaded 16 port 1U Black Patch Panel Frame with rear management tray.

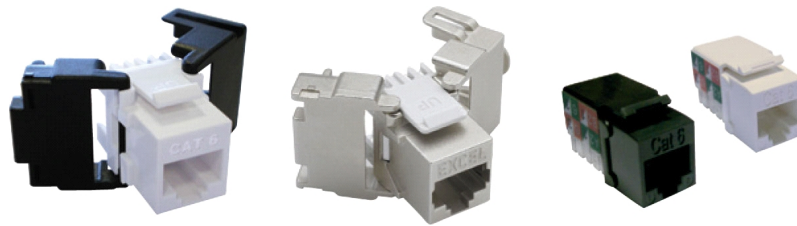


Part No 100-028, Unloaded 24 port 1U Chrome Patch Panel Frame with rear management tray.



Part Numbers

Part No.	Description
100-025	16 port 1U Unloaded Black Keystone Frame
100-026	24 port 1U Unloaded Black Keystone Frame
100-027	16 port 1U Unloaded Chrome Keystone Frame
100-028	24 port 1U Unloaded Chrome Keystone Frame



Related Products

Part No.	Description
100-203	Category 5e Unscreened Butterfly Style Toolless Keystone Jack - White
100-204	Category 5e Unscreened Butterfly Style Toolless Keystone Jack - Black
100-906	Category 5e Screened Butterfly Style Toolless Keystone Jack
100-211	Category 6 Unscreened U/UTP Toolless Keystone Jack, Butterfly Style, White
100-212	Category 6 Unscreened U/UTP Toolless Keystone Jack, Butterfly Style, Black
100-210	Category 6 Screened STP Toolless Jack - Butterfly Style
100-180	Category 6A Screened Keystone Jack, Butterfly Style, Toolless
100-181	Category 6A Low Profile Screened Keystone Jack - Toolless

Related Products

Part No.	Description
100-010	Excel Plus Category 5e Keystone Jack, RJ45, White
100-010-BK	Excel Plus Category 5e Keystone Jack, RJ45, Black
100-011	Category 6 Unscreened (UTP) Keystone Jack, White
100-011-BK	Category 6 Unscreened (UTP) Keystone Jack, Black
35-485	110 punchdown tool
35-495	Replacement blade set for 35-485

Related Products

Part No.	Description
100-031	1U Cable Management Bar, 5 way, Chrome
100-582	1U Cable Management Bar, 4 Vertical Metal Hoops, Black
100-586	1U Cable Management Bar, 5 Vertical Plastic Hoops, Black
100-590	1U Cable Management Bar, 3 Vertical, 2 Horizontal Metal Hoops, Black
100-594	2U Cable Management Bar , 4 Vertical Metal Hoops, Black

Excel is a world-class premium performing end-to-end infrastructure solution - designed, manufactured, supported and delivered - without compromise.

Contact us at sales@excel-networking.com

